

Local Pumpout Facilities

■ pumpout boat ● shoreside facility

LOCATION	CONTACT INFORMATION	FACILITY TYPE
Cohasset Harbor		
Harbormaster	Ch. 10,16 781-383-0863	■
Scituate Harbor		
Cole Parkway Marina	Ch.9 781-545-2130	●
Waterline Mooring	Ch 9 781-545-4154	■
North River		
Harbor Mooring (North & South Rivers)	Ch. 9 781-544-3130 cell: 617-281-4365	■
Riverways Marina (members only)	781-545-3004	●
Mary's Boat Livery	Ch. 9, 16 781-837-2322	●
South River		
Harbor Mooring (North & South Rivers)	Ch. 9 781-544-3130 cell:617-281-4365	■
Erickson's Marina	781-837-2687	●
White's Ferry Marina (members only)	Ch. 9, 11 781-837-9343	●
Bridgeway	Ch. 9,11 781-837-9343	●
Green Harbor		
Green Harbor Marina	Ch. 9 781-834-5541	●

Pumpout Facilities

Look for this sign



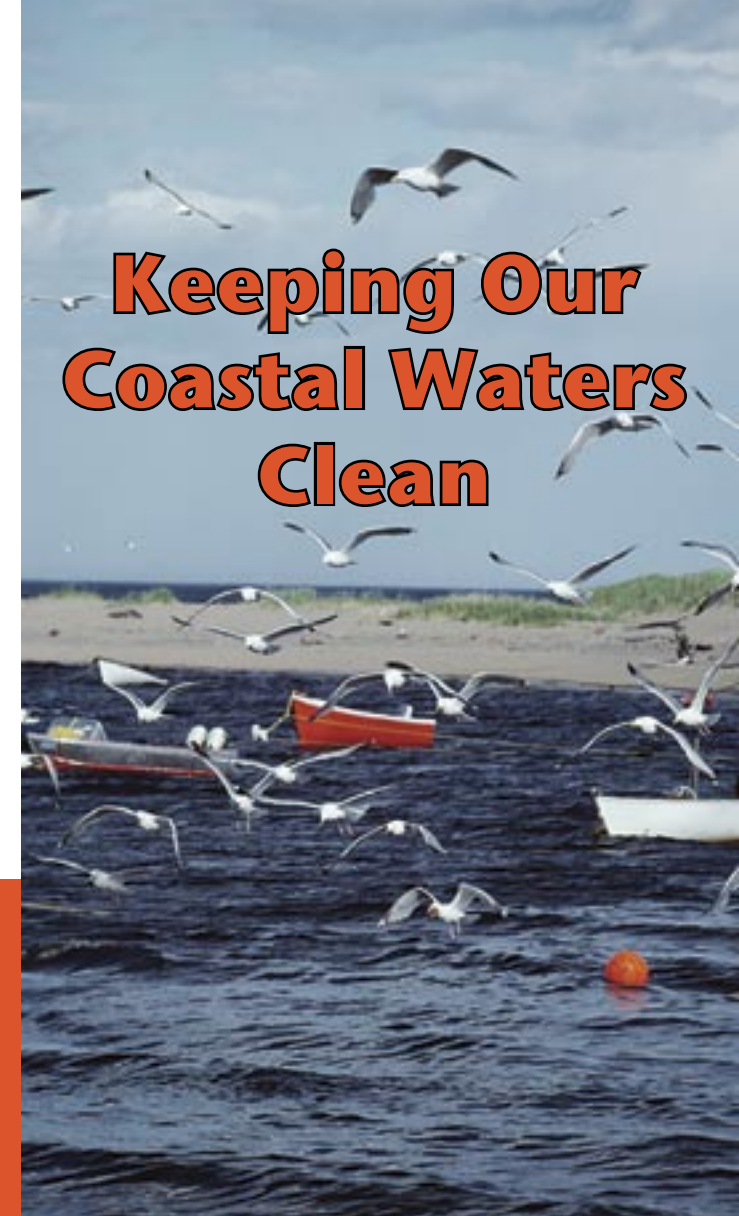
And don't forget to call ahead for efficient service



Sponsored by the North & South Rivers Watershed Association, Mass Bays Program, and the towns of Cohasset, Scituate and Marshfield
Funding provided by the Bilezekian Family Foundation

Please help keep our coastal waters clean

Keeping Our Coastal Waters Clean



A Guide to Our No Discharge Area & Pumpout Facilities

Cohasset • Scituate • Marshfield
North & South Rivers

It is now illegal to dump any waste from a vessel in the coastal waters from Cohasset to Marshfield

What is a No Discharge Area?

A No Discharge Area is a designated area where the overboard discharge of ALL boat sewage, regardless of treatment, is prohibited. This means that vessels with either through-hull waste disposal systems (Types I and II Marine Sanitation Devices or MSDs) or holding tanks (Type III MSDs) must use approved pumpout facilities within the No Discharge Area.

Why was A No Discharge Area created?

The coastal waters of the South Shore contain abundant and diverse marine life, but Cohasset Cove, Cohasset Harbor, the Gulf River Estuary (in Scituate and Cohasset), Scituate Harbor, Green Harbor (Marshfield), and the North and South Rivers do not meet Clean Water Act standards because of bacterial contamination.

Boat sewage contains bacteria and viruses, nutrients and chemical products, all which are harmful to the environment. The bacteria and viruses can cause diseases, like hepatitis, even at low exposure levels. Nutrients, particularly nitrogen, cause algal blooms that are harmful to fish, shellfish and eelgrass beds. Chemical products, used to reduce odor, can be toxic to marine life.

Pumping wastes out of your boat into designated pumpout facilities helps keep the environment clean, resulting in healthy bays, estuaries and ocean waters.

What must I do to comply?

When boating in a No Discharge Area, Type I, II and III MSDs cannot be discharged. Type I and II MSDs must be secured to prevent discharge by one of the following methods:

1. Closing the seacock and padlocking
2. Using a non-releasable wire tie
3. Using a door handle lock
4. Removing the seacock handle (with the seacock closed)

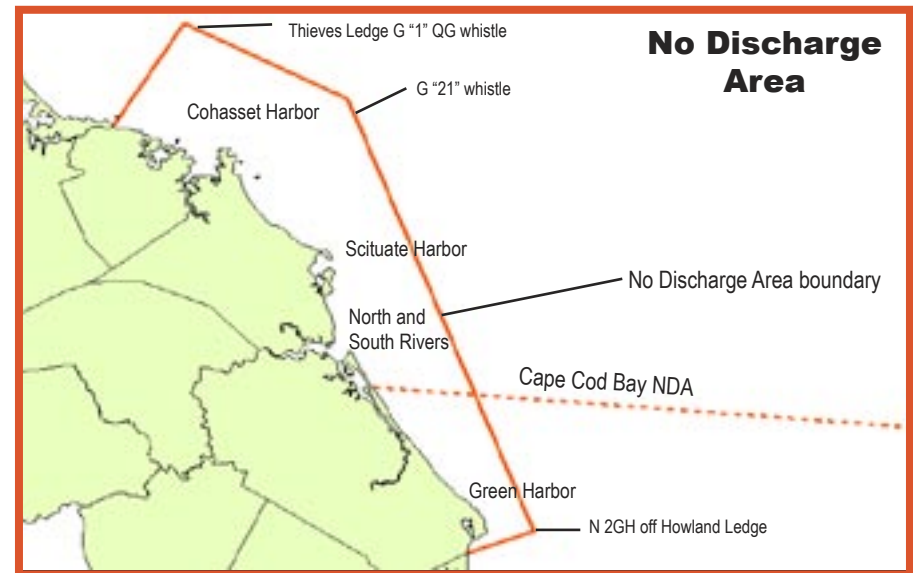
Portable toilets or “porta-potties” are not considered installed toilets and are not subject to the MSD regulations. They are, however, subject to the disposal regulations, which prohibit the disposal of raw sewage within the 3-mile limit or territorial waters of the United States, the Great Lakes or navigable rivers. *Type III MSDs and “porta-potties” are the only sanitary equipment that can be used in a No Discharge Area.*

Enforcement

These regulations are enforceable by any agent with authority over marine resources, including harbormasters.

How do I pumpout?

Pumpout facilities are located throughout the South Shore (see list on back panel). You should call the pumpout facility to make arrangements. In most cases pumpouts are free, thanks to Clean Vessel Act grant support.



There are two types of pumpout facilities: stationary facilities located shoreside, and pumpout boats that will often come and meet you. Look for this sign.

